



Pennington  
Elementary  
Sensory Wall  
Presentation  
March 19, 2024



# Agenda

What is a sensory wall?

Benefits to students

Visuals

Saturday Workshop

Q & A

# What is a sensory wall?

A sensory wall is a space on a wall that provides tactile (touch) sensory input to children's fingers and hands.





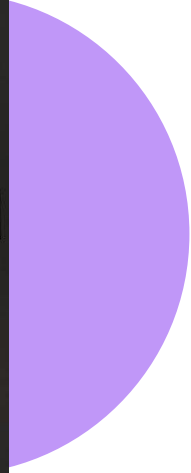
**Sensory walls can open up a whole new world for children with developmental delays. Providing a stimulating environment can:**

- 1.** Increases concentration and focus attention
- 2.** Promotes atmosphere exploration where children can enjoy
- 3.** Develops the concept of cause and effect
- 4.** Develops language and communication stimulation
- 5.** Promotes social interactions with teachers and peers
- 6.** Results in more calmness and lower aggressive behaviors
- 7.** Increases opportunity for self-awareness and making choices
- 8.** Promotes sharing and turn taking skills

# Examples of Indoor Sensory Walls













# SENSORY BOARD





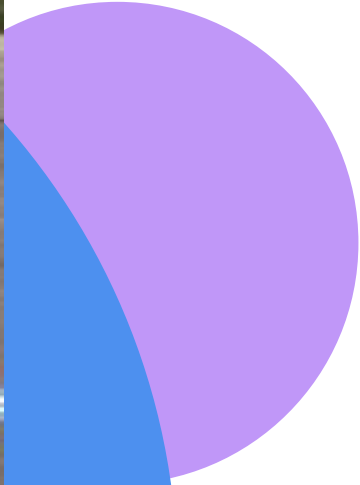




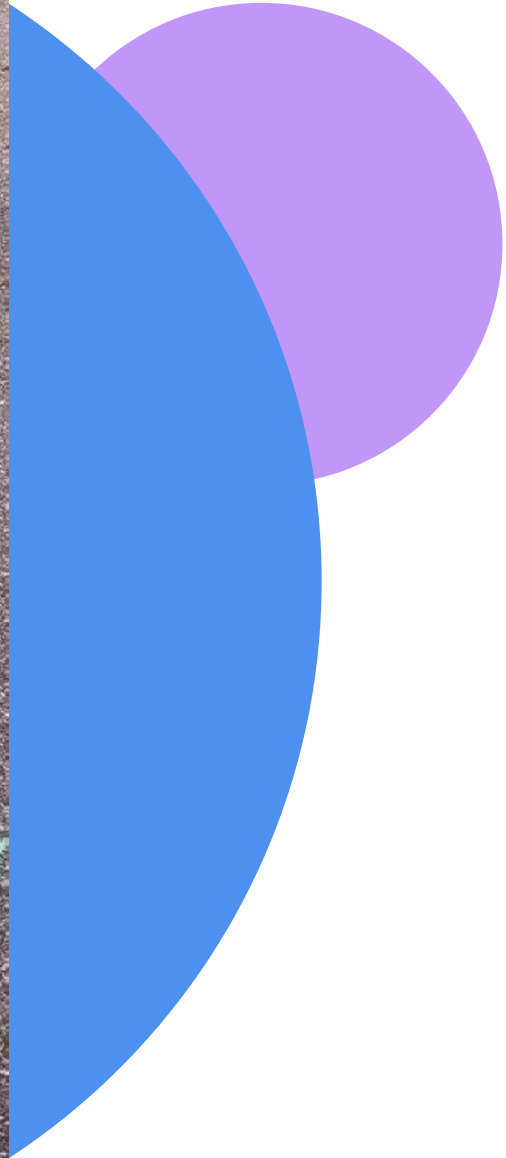
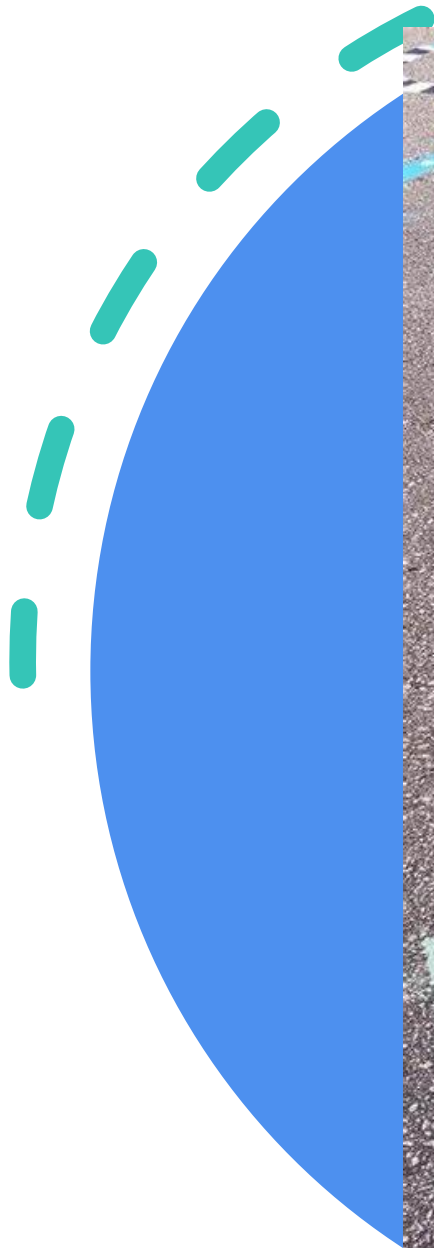
# Examples of Outdoor Sensory Spaces











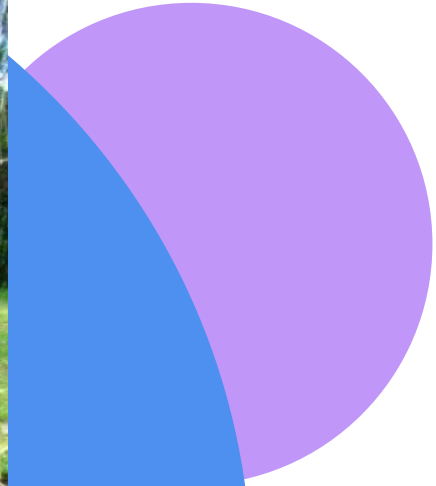






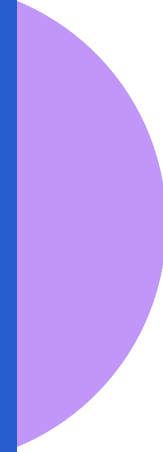




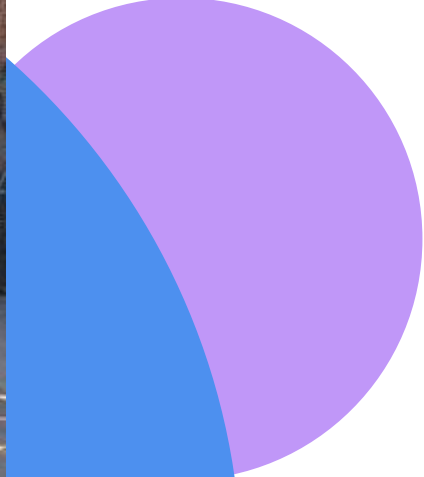




Get Moving



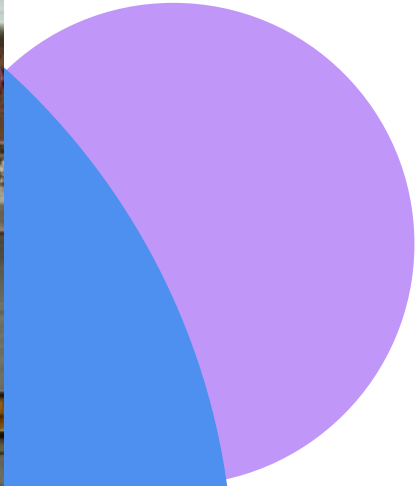


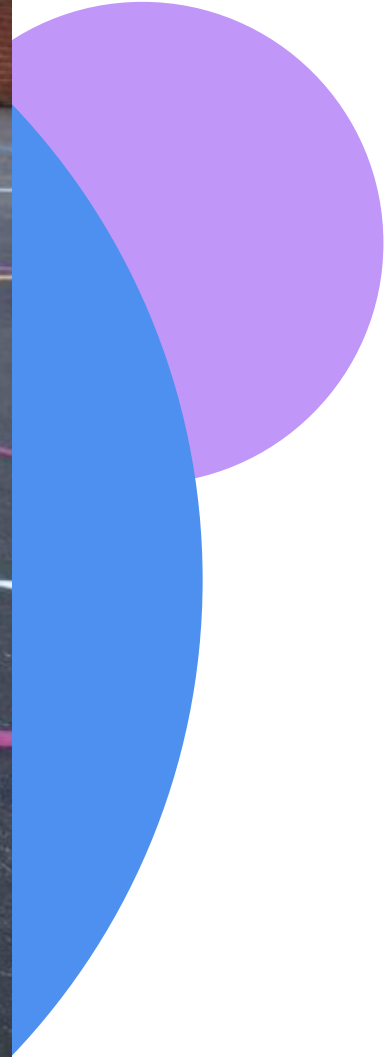




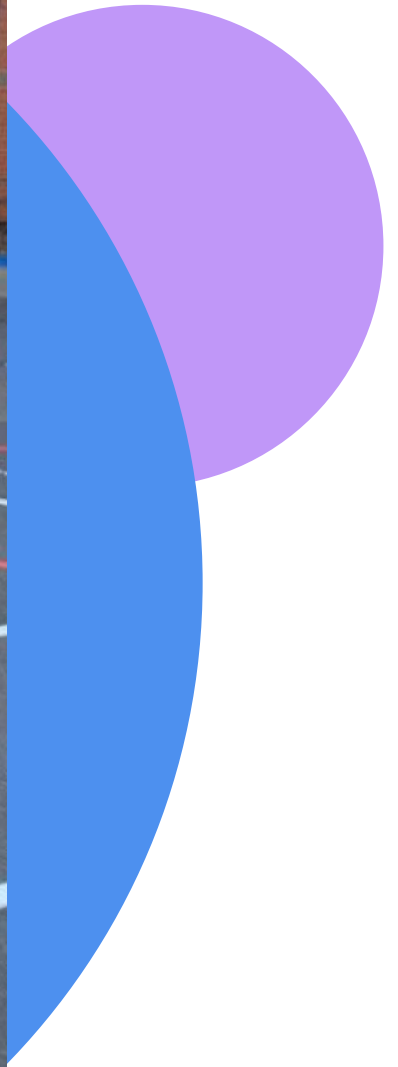
[www.TheSensoryPath.com](http://www.TheSensoryPath.com)















# Saturday Workshop

We would like to bring families together on a Saturday for fun, get to know one another and to help create the sensory boards for our school. Parents can choose their project: indoor or outdoor sensory wall.

What the school will provide.....	What parents will....
The board the sensory items will go on	Create the design of the board
The fasteners and/or glue to hold the materials on the board	Bring the materials they would like on their board
Refreshments	Install/fasten/glue the materials on the board
Recognize your family as a contributor and have your name placed on the board you designed.	

# Q&A



Thank you

